



---

---

---

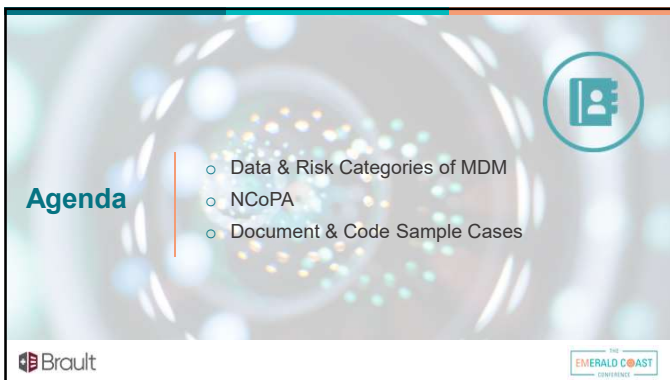
---

---

---

---

---



---

---

---

---

---

---

---

---



---

---

---

---

---

---

---

---

**Risk of Management**

- o **High**
  - Parenteral controlled substances
  - Hospitalization or escalation
  - Toxic medications
- o **Moderate**
  - Prescription drug management
  - Minor surgery with identified patient or procedure risk
  - SDOH

Brault | EMERALD COAST

---

---

---

---

---

---

---

---

**Data**

- o **Low (1 of 2)**
  - C1 Tests and Documents (2)
    - Prior external note
    - Order/Review tests
  - C2 Independent Historian
- o **Moderate (1 of 3)**
  - C1 Tests, Documents and Independent Historian (3)
  - C2 Independent Interpretation
  - C3 Discussion with...
- o **High (2 of 3)**

Brault | EMERALD COAST

---

---

---

---

---

---

---

---

**NUMBER & COMPLEXITY OF PROBLEMS ADDRESSED**



Brault | EMERALD COAST

---

---

---

---

---

---

---

---



**Problems Addressed**

It is evaluated or treated at the encounter by the physician. This includes consideration of further testing or treatment that may not be elected by virtue of risk/benefit analysis or patient / parent / guardian / surrogate choice.

Brault

EMERALD COAST

---

---

---

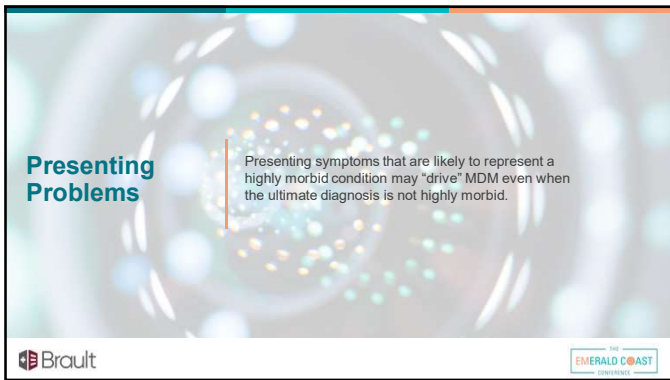
---

---

---

---

---



**Presenting Problems**

Presenting symptoms that are likely to represent a highly morbid condition may "drive" MDM even when the ultimate diagnosis is not highly morbid.

Brault

EMERALD COAST

---

---

---

---

---

---

---

---



**Comorbidities**

Comorbidities and underlying diseases, in and of themselves, are not considered in selecting a level of E/M services **unless** they are addressed, and their presence increases the amount and/or complexity of data to be reviewed and analyzed or the risk of complications and/or morbidity or mortality of patient management.

Brault

EMERALD COAST

---

---

---

---

---

---

---

---

**Low / Moderate**

**99283**

- o **Low**
  - Acute uncomplicated illness or injury
  - 2 or more self-limited or minor problems
- o **Moderate**
  - Chronic illness with exacerbation
  - Undiagnosed new problem
  - Acute illness with systemic symptoms
  - Acute, complicated injury

Brault EMERALD COAST

---

---

---

---

---

---

---

---

**Moderate / High**

**99284**

- o **Moderate**
  - Chronic illness with exacerbation
  - Undiagnosed new problem
  - Acute illness with systemic symptoms
  - Acute, complicated injury
- o **High**
  - Chronic illness with severe exacerbation
  - Acute or chronic illness or injury that poses a threat to life or bodily function

Brault EMERALD COAST

---

---

---

---

---

---

---

---

**Feels like?**

- Uncomplicated injury
- Uncomplicated illness
- Complicated injury
- Acute illness with systemic symptoms
- Undiagnosed new problem

Brault EMERALD COAST

---

---

---

---

---

---

---

---

**Acute / Uncomplicated**

- A recent or new short-term problem
- Low risk of morbidity for which treatment is considered
- Little to no risk of mortality with treatment
- Full recovery without functional impairment is expected

Brault

THE EMERALD COAST  
ORANGE COUNTY

---

---

---

---

---

---

---

---

**Uncomplicated vs. Complicated Injury**

An injury which requires treatment that includes evaluation of body systems that are not directly part of the injured organ, the injury is extensive, or the treatment options are multiple and/or associated with risk of morbidity.

Brault

THE EMERALD COAST  
ORANGE COUNTY

---

---

---

---

---

---

---

---

**Acute Illness**

**99284**

- High risk of morbidity without treatment

**99285**

- Poses a threat to life or bodily function, in the near term without treatment

Brault

THE EMERALD COAST  
ORANGE COUNTY

---

---

---

---

---

---

---

---



---

---

---

---

---

---

---

---



---

---

---

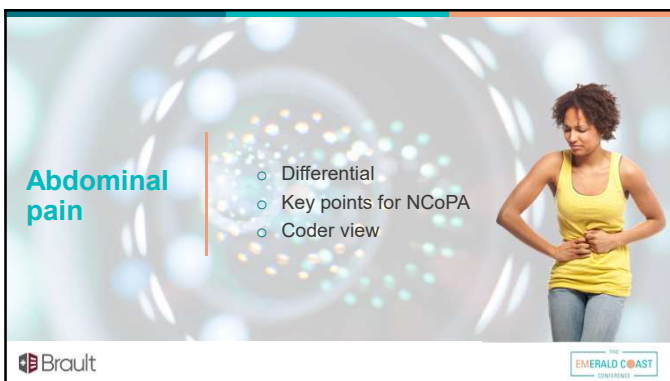
---

---

---

---

---



---

---

---

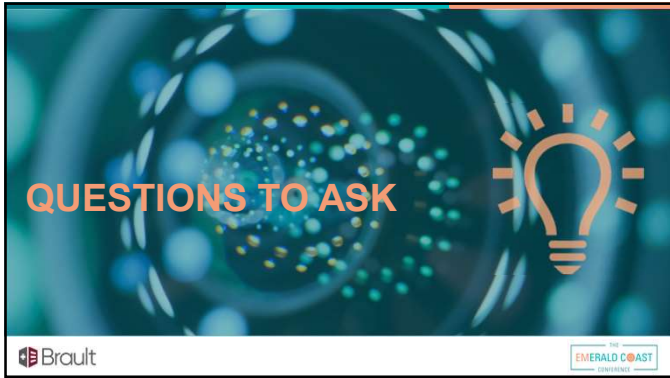
---

---

---

---

---



---

---

---

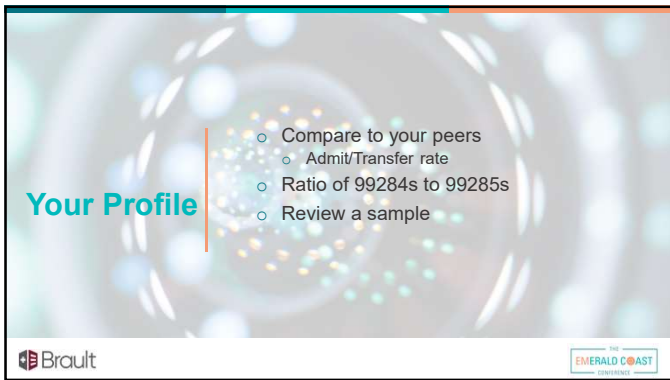
---

---

---

---

---



---

---

---

---

---

---

---

---



---

---

---

---

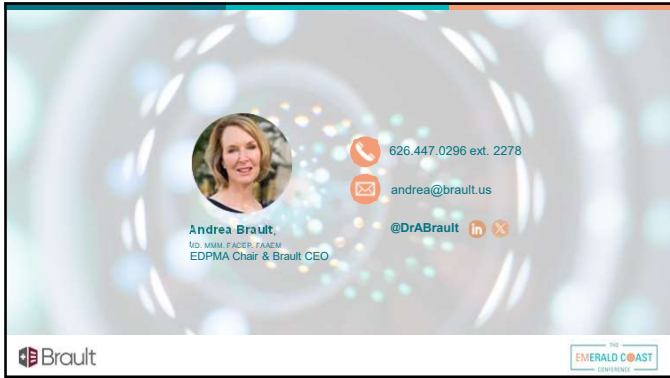
---

---

---

---





A business card for Andrea Brault. The card features a circular portrait of her on the left. To the right of the portrait are contact details: a phone icon with the number 626.447.0296 ext. 2278, an email icon with the address andrea@brault.us, and a social media icon with the handle @DrABrault. Below the portrait, her name and titles are listed: Andrea Brault, Ed. MHA, FACHE, FACHE, EDPMA Chair & Brault CEO. The card also includes the Brault logo in the bottom left and The Emerald Coast logo in the bottom right.

---

---

---

---

---

---

---

---